

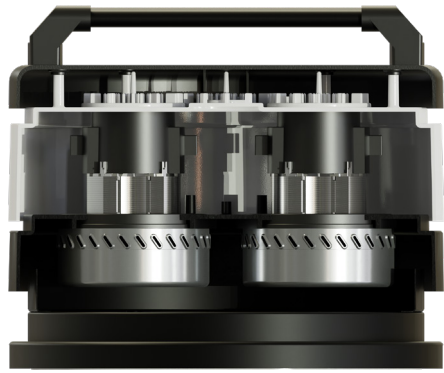
S2M ICLEAN is a 235 ICLEAN 2-motor direct derivation cleaner, strengthened with a new trolley and with characteristics of great versatility and ease of use. Among the 2-motor vacuum cleaners, it is the most effective for vacuuming fine dust, where it stands out for its reliability, confirming itself as one of the best products on the market.

TECHNICAL FEATURES

SLINE ICLEAN

MODELS	S 2M ICLEAN 230V ☺	S 2M BAG ICLEAN ☺
MOTORIZATION	n°2 By-pass	n°2 By-pass
POWER	2400 W	1600 W
VOLTAGE	230 V	110 V
FREQUENCY	50/60 Hz	50/60 Hz
AMPERAGE	9,6 A	9,6 A
AIRFLOW	340 m³/h	300 m³/h
DEPRESSION	230 mBar	200 mBar
Ø NOZZLE	Tangential Ø 60 mm	Tangential Ø 60 mm
BODY DIAMETER	Ø 370 mm	Ø 370 mm
DIMENSIONS	70x54x122 cm	70x54x122 cm
WEIGHT	61 Kg	61 Kg
FILTERING SYSTEM	S 2M ICLEAN	S 2M ICLEAN
FILTER TYPE	2x Cartridge	2x Cartridge
PRIMARY FILTER - SURFACE	- cm²	- cm²
FILTER MEDIA	HEPA+PTFE	HEPA+PTFE
SECONDARY FILTER	NO	NO
FILTER CLEANING	Automatic	Automatic
COSTERIZATION SYSTEM	S 2M ICLEAN	S 2M ICLEAN
CAPACITY	Barrel 45l	Longopac
LONGOPAC BARREL INTERCHANGEABILITY	YES	YES





◀ 2 By-pass motors



◀ Motorhead with automatic cleaning system ICLEAN



◀ Easy barrel release system

FINE DUST

S 2M ICLEAN

SLINE

Cleaning options ▶

VIBRATION
ICLEAN

Tangential inlet ▶



▶ Longopac® continuous bag collection system

